

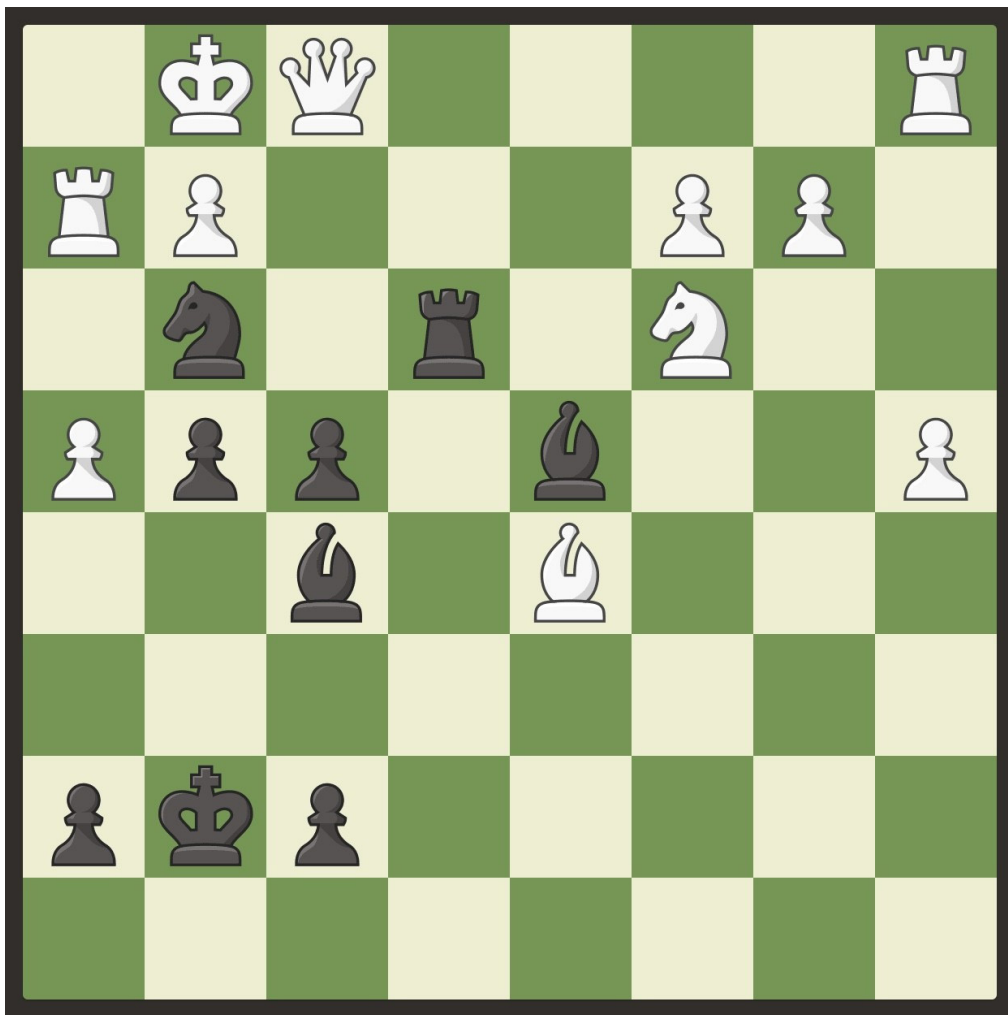
January Chess Puzzle

Supplied by Chess.com

Checkmate in One

Black to move.

Black has many checks but only one is checkmate. Watch out for PINNED PIECES - pieces that cannot move because it would leave the king under attack.



Supplied by <https://chess.com/> the #1 chess website. Used with permission.
For more chess puzzles please visit <https://chess.com/>

The answer for this puzzle is available on our website ([click here](#))