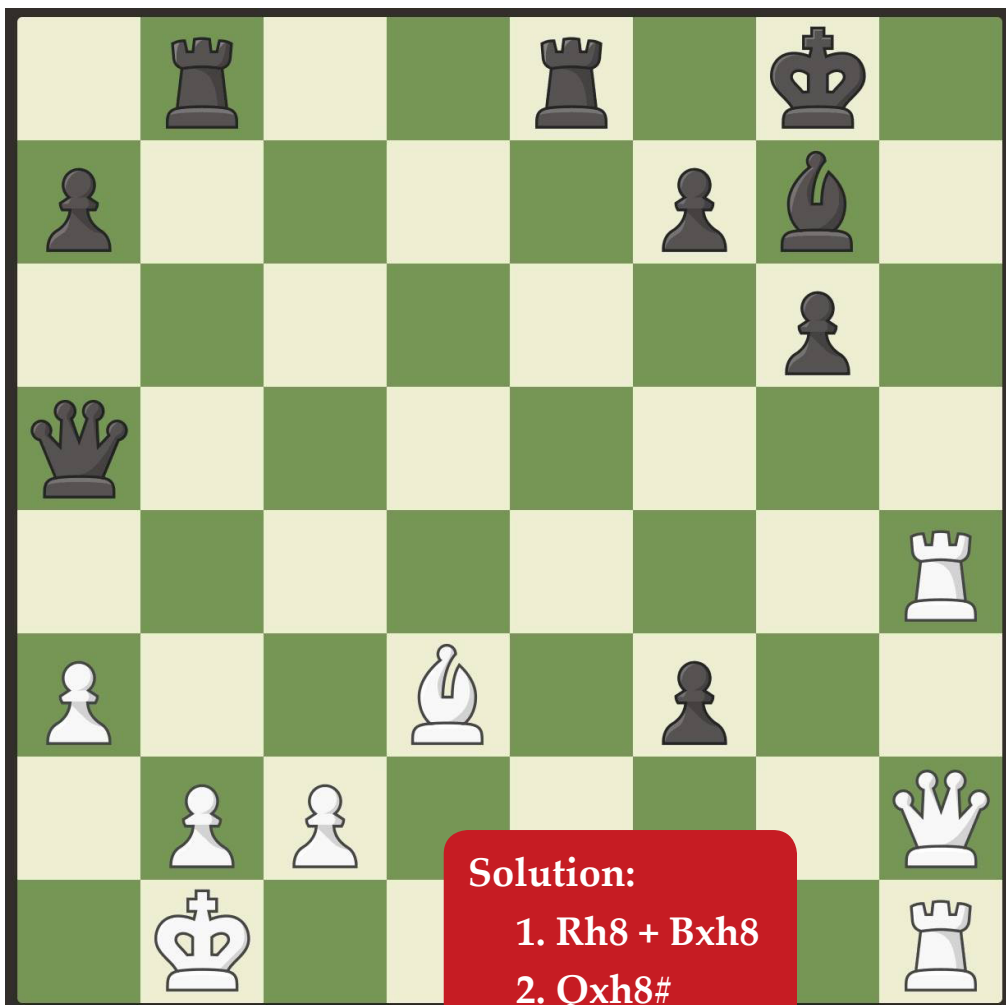


February Chess Puzzle

Supplied by Chess.com

Checkmate in 2

If you recall, we have already done one of these in the Beginner: Checkmate course. It's trickier because you have to look ahead to see what your opponent's move is going to be!



Solution:

1. Rh8 + Bxh8
2. Qxh8#

Supplied by <https://chess.com/> the #1 chess website. Used with permission.
For more chess puzzles please visit <https://chess.com/>

The answer for this puzzle is available on our website ([click here](#))