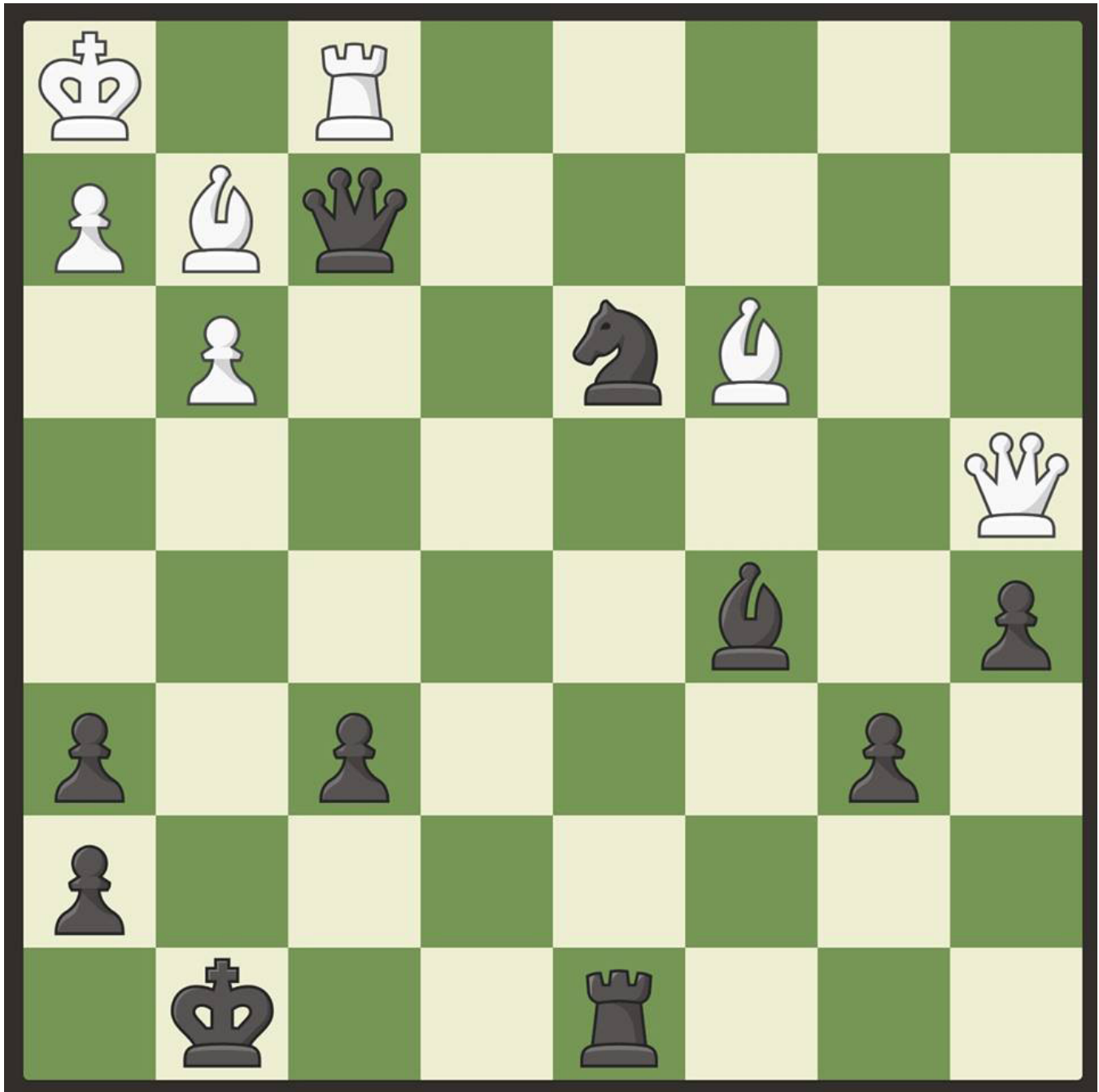


# ACTIVITY

## Checkmate in Two Moves

Supplied by Chess.com

You play Black. Look for FORCING MOVES like checks and captures. This will limit the opponent's options. The pattern is a famous one and the mating net is called a "smothered mate".



Supplied by <https://chess.com/> the #1 chess website. Used with permission.  
For more chess puzzles please visit <https://chess.com/>

You can find the answers for this activity on the Mom's Favorite Reads website here:  
<https://moms-favorite-reads.com/magazines/activities/>